



2016 U.S. OPEN CHAMPIONSHIP

Next year's U.S. Open will be conducted from June 13-19 at Oakmont Country Club in Oakmont, Pa. Please visit usopen.com for additional information.



The United States Golf Association recognizes the importance of sustainability and making a commitment to reducing our environmental footprint. As an organization, we consider making eco-conscious decisions at all levels of planning, including our national championships, right down to printing this Spectator Information Guide on recycled paper.

Spectators play an important role in this process. Here are some ways spectators can help us reach our goals of achieving an eco-friendly 2015 U.S. Open:

- Dispose of plastic bottles, aluminum and paper in blue recycle bags.
- Dispose of trash (food, cups, concession wares) in green bags.
- Remove trash and recyclables from spectator buses and dispose of them in the proper collection area.
- Use marked paths and spectator walkways whenever possible.
- Please help keep our grounds litter-free by placing cigarettes or cigars in appropriate containers.



2015 U.S. Open Championship
Chambers Bay | University Place, Wash.
June 15-21, 2015 | usopen.com



United States Golf Association
PO Box 1500 | Far Hills, NJ 07931-1500
usga.org

For exclusive content, updates, news and information:

- Follow us on Twitter: [@usopengolf](https://twitter.com/usopengolf)
- Like us on Facebook: facebook.com/usopen

115th U.S. OPEN CHAMPIONSHIP

SPECTATOR INFORMATION GUIDE



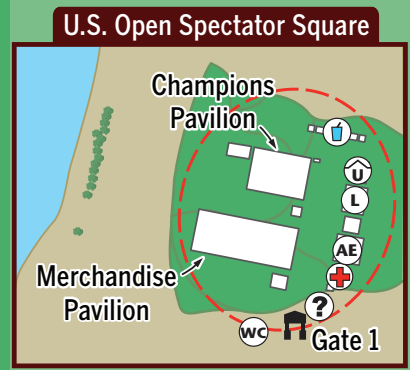
CONTENTS

Welcome Letter	3
Schedule of Events	4
Spectator Information	5
Mobile Device Policy	8
Security (List of Prohibited Items)	8
USGA Partner Information	12
Parking and Transportation	14
Golf Course Map	19



2015 U.S. Open Championship Chambers Bay

- Admission Gate 
- USGA Member Clubhouse 
- American Express Championship Experience 
- Centurion Lounge by American Express 
- Lexus Performance Drive Pavilion 
- Information 
- Food Court 
- Will Call 
- First Aid 
- Spectator Shuttle Drop 
- Wi-Fi and Phone Zone 





Welcome to Chambers Bay and the 2015 U.S. Open Championship, our first U.S. Open in the Pacific Northwest.

Although this is the first time that our premier championship is being conducted in this region, the Pacific Northwest has a long, distinguished history in the game. Some of our most decorated players, eight-time USGA champion JoAnne Gunderson Carner and seven-time champion Anne Quast Sander among them, hail from this area. We first brought a USGA championship to this region more than 80 years ago, and we will host our 60th USGA championship in the area later this summer, when Portland Golf Club hosts the U.S. Women's Amateur.

Chambers Bay previously hosted the U.S. Amateur, our oldest championship, in 2010, and Peter Uihlein defeated David Chung in the final, 4 and 2. The course was designed by Robert Trent Jones Jr. and opened in 2007, and its dramatic design elements and spectacular setting on Puget Sound are sure to produce an exciting championship for competitors, spectators and viewers around the world.

We hope you thoroughly enjoy our 115th U.S. Open, and we urge you to join us at another of our national championships this year. As always, thank you for your support of this great game and our mission to preserve and enhance it for generations to come.

Sincerely,

A handwritten signature in black ink, which appears to read "Tom O'Toole". The signature is fluid and cursive, with a large initial "T" and "O".

Thomas J. O'Toole Jr.
USGA President

SCHEDULE OF U.S. OPEN EVENTS

All times are PDT and schedules are subject to change. Starting times will be posted when available at usopen.com.

Pre-Championship Merchandise Opening at the Main Merchandise Pavilion

Thursday, June 11 through Sunday, June 14 (10 a.m. to 6 p.m.). No ticket is necessary to enter the Main Merchandise Pavilion during these pre-championship hours. The golf course will be closed to the public.

Practice Rounds

Players will have the option of starting practice rounds at the first or 10th tee. Players electing to play a full round generally begin between 7 a.m. and 3 p.m. It is typical for players to be on the golf course or practice areas until at least 7 p.m.

Monday, June 15 (Gates open 6 a.m. to 7 p.m.)

Tuesday, June 16 (Gates open 6 a.m. to 7 p.m.)

Wednesday, June 17 (Gates open 6 a.m. to 7 p.m.)

Championship Rounds 1 and 2

Play is scheduled to begin at 7 a.m. from both the first and 10th tees. The last groups will begin play at 3:12 p.m. from both the first and 10th tees.

Thursday, June 18 (first round) (Gates open 6 a.m. to conclusion of play)

Friday, June 19 (second round) (Gates open 6 a.m. to conclusion of play)

Championship Rounds 3 and 4

The first starting time will be determined by the number of players who make the cut at the conclusion of the second round (60 lowest scorers and anyone tying for 60th place). Generally, the first pairing begins play from the first tee between 8-9 a.m.; the last pairing for both days will start from the first tee at approximately 3 p.m.

Saturday, June 20 (third round) (Gates open 6 a.m. to conclusion of play)

Sunday, June 21 (fourth round) (Gates open 6 a.m. to conclusion of play)

Playoff

If there is a tie for the low score after 72 holes, an 18-hole playoff will be held on Monday, June 22. The playoff will begin at approximately 9 a.m. Gates will open at 7 a.m.

SPECTATOR INFORMATION

1895 Club

The 1895 Club is an exclusive on-site, climate-controlled pavilion located in close proximity to Gate 2 and to the player's left of the 13th hole. This all-inclusive ticket features breakfast, buffet lunch with hot entrees, afternoon snacks and full bar service. 1895 Club tickets are needed to access this tent. Regular Junior tickets do not provide access into the 1895 Club, but 1895 Club ticket holders can purchase 1895 Club Junior tickets for juniors age 17 and under (\$75 per day for practice rounds and \$130 per day for championship rounds) on-site at Will Call. There is a maximum of two 1895 Club Junior tickets per one adult 1895 Club ticket holder.

Hours of Operation:

June 15-21 (Monday through Sunday) 6 a.m. to 7 p.m.

American Express Championship Experience

All spectators are invited to visit the American Express Championship Experience in U.S. Open Spectator Square. Enhance your experience and get closer to the game you love through unique and interactive programming for all golf enthusiasts.

Centurion® & Platinum Card® Members are welcome to relax, recharge and reboot at The Centurion LoungeSM located in close proximity to Gate 2 and to the player's left of the 13th hole.

Autographs

Spectators should keep in mind that the player's first responsibility during U.S. Open week is to compete for the national championship. For this reason, a no-autograph policy is in effect on course throughout championship week. Spectators should not approach any player for an autograph from the time a player is en route to his first tee until the completion of his round. This policy applies to practice rounds as well as championship rounds.

Camera Policy

Stand-alone cameras may only be brought, and mobile device camera features may only be used, during practice rounds (Monday through Wednesday) and only for personal photographic use. No photography is permitted in the presence of a player from the time he addresses the ball until the completion of his swing (i.e., when a marshal's arms are raised). Video and audio recording are not permitted at any time with any device.

Violation of the above policy may result in immediate expulsion and loss of ticket privileges for the remainder of the championship.

Corporate Hospitality

The USGA provides a range of hospitality facilities for on-site corporate entertainment. Specific tickets are required to gain access

into each of the corporate hospitality venues, regardless of age. Junior tickets do not provide access to any of the corporate facilities. IBM Business Centers offering internet access, printers, etc., will be available in all hospitality areas. For information regarding corporate hospitality at future U.S. Open Championships, please visit usopen.com or contact MSG Promotions, Inc., the USGA's exclusive corporate hospitality services marketing and management company at (484) 223-3295.

Disabled Spectator Services

The USGA is committed to providing a positive and user-friendly experience for all spectators with disabilities and is pleased to provide the following services:

- Accessible parking spaces for all vehicles having appropriate HD/DP license plates or placards will be reserved at all parking locations. Please see additional parking information on Page 14.
- Our Disabled Services Committee will be on-site to assist disabled spectators with transportation to and from Disabled Services Headquarters and specific grandstand locations and facilities throughout the golf course via multi-person golf carts.
- A number of motorized scooters will be available at the Disabled Services Headquarters at Gate 1 and Gate 2 for spectators with disabilities on a first-come, first-served basis, compliments of the USGA and Pride Mobility.
- Telecommunications Devices for the Deaf will be available at the Disabled Services Headquarters located near Gate 1.
- Accessible restrooms will be available at portable restroom locations throughout the championship grounds.
- Select concessions, merchandise tents, spectator experience areas and public phone facilities will be accessible.

First-Aid Stations

First-Aid stations will be located at Gate 1 in U.S. Open Spectator Square, Gate 2 and to the player's left of the fourth tee. All first-aid stations will be staffed with emergency medical technicians. Complimentary water will be provided at all first-aid stations. If a medical emergency arises, please notify a volunteer or USGA official.

Grandstands

Approximately 18,000 grandstand seats will be located at strategic viewing areas throughout the golf course for spectators. Due to limited viewing along rope lines, spectators are encouraged to utilize grandstand seating to view golf rather than following a specific group of players. Seating is provided on a first-come, first-served basis. Access to the grandstands is subject to applicable USGA policies, which will be posted at the entrance point to each grandstand.

Junior Tickets

Junior tickets are always available on-site at Will Call and at all admission gates during the championship. Juniors age 12 and under

receive complimentary tickets on any day when accompanied by an adult ticket or credential holder. Tickets for juniors age 13 to 17 will be available for purchase when accompanied by a valid adult ticket or credential holder (\$20 per day for practice rounds and \$40 per day for championship rounds). There is a maximum of two Junior tickets per one adult ticket or credential holder. Junior tickets provide access into the Trophy Club when accompanied by an adult Trophy Club ticket or credential holder but do not provide access into any USGA corporate hospitality facilities or 1895 Club. For more information please visit usopen.com.

Lexus Performance Drive Pavilion

Visit the Lexus Performance Drive Pavilion for a once-in-a-lifetime opportunity to have your picture taken with the U.S. Open trophy as well as a chance to win a \$1000 American Express gift card. Spectators are also encouraged to take part in state-of-the-art interactive golf experiences and chalk talks with Lexus Golf Ambassadors.

Lost and Found/Missing Persons

Any lost and found items or missing persons will be taken to the Lost and Found/Missing Persons Headquarters located at Gate 1.

Merchandise Pavilion

The Main Merchandise Pavilion, covering 41,000 square feet, will be located in U.S. Open Spectator Square as you enter through Gate 1. A variety of merchandise bearing the U.S. Open Championship logo will be available for purchase, including caps, golf shirts, t-shirts, jackets, lanyards, lapel pins, golf balls, repair tools, ball markers, towels and much more. Acceptable forms of payment are: U.S. dollars, traveler's checks, American Express, Discover, MasterCard, Visa and debit cards. Personal checks are not accepted. There will be a Satellite Merchandise Tent as you enter through Gate 2, which will be open during U.S. Open week only. For your convenience a merchandise bag check tent and shipping tent will be located adjacent to the Main Merchandise Pavilion.

Hours of Operation:

Pre-Championship (Main Merchandise Pavilion Only)

June 11-14 (Thursday through Sunday) 10 a.m. to 6 p.m.

The Main Merchandise Pavilion is open to the public on pre-championship days (June 11-14). No tickets or credentials will be required to enter the Main Merchandise Pavilion during these days; however, the course will be closed to the public. Please follow directional signs for complimentary parking.

U.S. Open Championship Week

June 15-21 (Monday through Sunday) 7 a.m. to 8 p.m.

Since the Main Merchandise Pavilion and Satellite Merchandise Tent are located on the championship grounds, you must have a ticket or credential to gain entry during the championship.

POLO RALPH LAUREN

Polo Ralph Lauren is the official outfitter of the U.S. Open and the USGA, designing apparel and outfitting all USGA committee members, staff and volunteers at the U.S. Open Championship. Visit the merchandise tents located in U.S. Open Spectator Square and by Gate 2 to see the variety of official championship merchandise designed with the timeless, iconic style of Polo Ralph Lauren.

Mobile Device Policy

Spectators may carry mobile devices smaller than 7" in length and/or height, including cellphones, smartphones and PDAs. All device volume controls must be set to silent or vibrate at all times. Phone calls must be received or placed only in designated "Phone Zones" located around the golf course (see map). Phone calls must not be received or placed in any area that may disrupt play, including grandstands. Use of approved devices for photographs is subject to the camera/photography policy. Video and audio recording are not permitted at any time with any device. Texting and email are permissible throughout all areas of the golf course, but should not disrupt players.

Violation of the above policy may result in immediate expulsion and loss of ticket privileges for the remainder of the championship.

Security

Spectators and other championship attendees will go through security screening prior to entering the championship grounds and will not be allowed to bring any of the items listed below. To expedite admission into the championship, it is recommended that all prohibited items are safely stowed prior to arriving at the championship. Please be sure to read the following list of prohibited items carefully:

LIST OF PROHIBITED ITEMS*

- * No Weapons (regardless of permit, including but not limited to firearms or knives)
- * No Explosives and/or Fireworks of any kind
- * No Tablets and/or Computers (cellular mobile devices smaller than 7" are permitted)
- * No Noise-Producing Devices (including portable speakers)
- * No Cameras (other than Monday through Wednesday for personal photographic use)

Note: Use of cameras and mobile device camera features must follow the camera/photography policy (see Page 5).

- * No Video and/or Audio Recording at any time with any device
- * No Backpacks, Briefcases and/or Bags larger than 6" W x 6" H x 6" D in their natural state

Note: Transparent/clear plastic hand and shoulder bags no larger than 12"W x 12"H x 6"D are permitted.

- * No Signs, Posters and/or Banners

- * No Food and/or Beverages except for medical or infant needs
- * No Containers and/or Coolers except for medical or infant needs

Note: *Transparent/clear plastic water bottles (size 24 ounce or smaller) are permitted when empty.*

- * No Pets (other than service animals assisting disabled individuals)
- * No Lawn Chairs and/or Oversized Chairs with Arms (compact chairs without arms are permitted with no case)
- * No Ladders and/or Step Stools or other similar items
- * No Bicycles allowed inside admission areas or on the championship grounds
- * No Metal-Spiked Golf Shoes
- * No other items deemed unlawful, dangerous or disruptive by the USGA and/or Championship Security Personnel, in their sole discretion.

Spectator Safety and Etiquette

If you observe the following guidelines, your experience at the U.S. Open Championship will be a more enjoyable one:

- Walking the championship grounds at Chambers Bay can be difficult due to significant elevation changes and uneven surfaces. Be conscious of your physical limitations and be sure to wear appropriate footwear.
- Please stay behind gallery ropes and follow directions of championship marshals at all times.
- Do not cross fairways except at designated crosswalk areas.
- Be considerate of others and kneel or sit if you are in the front row of the gallery.
- Stay quiet and stand still when players are about to hit or when instructed by marshals.
- To ensure your safety at all times, walk carefully and never run.
- Drink plenty of fluids to prevent dehydration.
- Spectators will be subject to expulsion and the loss of ticket privileges for the following breaches of etiquette:
 - Making rude, vulgar or other inappropriate comments or gestures.
 - Verbal or physical harassment of players, volunteers, officials or spectators.
 - Distracting a player or any disruption of play.
 - Behavior that is unruly, disruptive, unsafe or illegal in nature.
 - Failing to follow the instructions of a championship official, volunteer or security personnel.

For more information on 2015 U.S. Open Championship spectator guidelines and for regular championship updates, please visit usopen.com.

Trophy Club

Located in close proximity to Gate 2 and to the player's left of the 13th hole, the Trophy Club is a climate-controlled pavilion offering seating for dining and live network coverage of the U.S. Open Championship in a sports bar-like setting. Trophy Club tickets are needed to access this tent. However, Junior tickets do provide access when accompanied by an adult ticket holder. Upgraded food and beverage may be purchased at additional charge. Coffee, soda, beer, wine and mixed drinks are available. Acceptable forms of payment are: U.S. dollars, traveler's checks, American Express, Discover, MasterCard, Visa and debit cards.

Hours of Operation:

June 15-21 (Monday through Sunday) 6 a.m. to 7 p.m.

USGA Member Clubhouse

Designed exclusively for USGA Members, and located in U.S. Open Spectator Square near Gate 1, the USGA Member Clubhouse will be a place to meet featured guests and take advantage of special Members-only offers and opportunities throughout the week of the championship.

Hours of Operation:

June 15-21 (Monday through Sunday) 8 a.m. to 7 p.m.

U.S. Open Websites and Mobile Products

Visit usopen.com, the official website of the 115th U.S. Open Championship, powered by IBM, for live shot-by-shot scoring, three channels of live HD video streaming, real-time highlights, hole insights, player statistics and the latest news, videos and photos from Chambers Bay. Fans can also keep up with all the action by accessing usopen.com on their mobile devices with the official U.S. Open mobile and tablet apps, available in the iTunes Store and Google Play. Attending the U.S. Open? Be sure to download the U.S. Open mobile app to enhance your experience with special on-site U.S. Open content.

Visitor Information

For information about the area, visit usopen.traveltacoma.com for the Tacoma Regional Convention & Visitors Bureau, or contact them by



phone at (800) 272-2662. For information on Seattle and King County go to visitseattle.org, or call (866) 732-2695. For information about University Place, Wash., go to cityofup.com.



Weather

Average June temperatures in University Place range from a high of 68 to a low of 50 degrees Fahrenheit. Please be prepared for all weather conditions.

The USGA will have a meteorology staff

on-site monitoring the possibility of dangerous or inclement weather. If hazardous weather conditions are approaching, special "weather alert" signs such as the one to the left will be displayed on leader boards and video boards around the course. When the sign appears, spectators are advised to take immediate precautions (including clearing grandstands) PRIOR to play being suspended. In the event of a weather alert, please avoid open areas, hilltops, high places, isolated trees, golf carts and wire fences. If play is suspended, indicated by one prolonged air-horn blast, please close your umbrella and seek shelter. In the event of a suspension of play, grandstands will be cleared immediately. Please note that play will resume as soon as conditions allow.

Will Call

Will Call facilities will be located on-site for spectators to drop off and pick up tickets at Gate 1 and Gate 2. Photo identification will be required to pick up any tickets left at Will Call. Will Call facilities cannot be accessed by vehicles at any time.

Hours of Operation:

Pre-Championship (Gate 1 Only)

June 11-14 (Thursday through Sunday) 10 a.m. to 6 p.m.

For parking, follow directional signs for Pre-Championship Merchandise Opening.

U.S. Open Championship Week

June 15-21 (Monday through Sunday) 6 a.m. to 7 p.m.





THANK YOU TO OUR PARTNERS



American Express

Together, American Express and the USGA have been providing world-class service and memorable moments to golf fans since 2006.

By creating exciting U.S. Open experiences and encouraging golfers to make nine-hole rounds a part of their active lifestyles through Play 9, American Express enhances the USGA's efforts to make the game more accessible and enjoyable for fans.



IBM

Through the development of usopen.com and mobile applications, the USGA collaborates with IBM to create a personalized, enhanced experience for fans following the U.S. Open Championship both on-site and online. IBM uses real-time technology solutions to deliver live video streaming, hole-by-hole scoring and chat-engagement opportunities to connect fans and experts to each other.



Lexus

Lexus is committed to partnering with the USGA to deliver a best-in-class experience for the world's best golfers by providing a fleet of courtesy luxury vehicles for all USGA championships. At the three U.S. Open championships, Lexus offers spectators access to unique state-of-the-art interactive experiences.



Rolex

Rolex serves as the Official Timekeeper of the USGA and its championships. To keep up with play, Rolex clocks are located throughout the course for your convenience. Rolex also supports the USGA's efforts to encourage the understanding and appreciation of the game through knowledge of the Rules.

SPECTATOR DRIVING DIRECTIONS

Chambers Bay is located 9 miles west of Tacoma and 39 miles south of Seattle. Complimentary parking and shuttle transportation will be provided to and from Chambers Bay. The general spectator parking lots will have accessible parking spaces for vehicles displaying appropriate HP/DP license plates or placards. For those requiring lift-equipped shuttle transportation, please contact the Admissions Office at (800) 698-0661 for further information.

U.S. OPEN PARKING (JUNE 15–21)

Complimentary parking will be provided at TWO large spectator lots. The BLUE Lot (Ft. Steilacoom Park) is located to the south of Chambers Bay and the RED Lot (Washington State Fairgrounds) is located to the north. Please follow general spectator parking signage and/or directions from parking attendants to the designated parking location. Complimentary shuttle transportation will be provided from both parking areas to and from Chambers Bay.

Spectators departing from points west (Gig Harbor/Key Peninsula) or from points south utilizing I–5 are advised to proceed to the BLUE Lot. Complimentary shuttle transportation is expected to take approximately 25 minutes in each direction. A map and driving directions to the BLUE Lot are located on subsequent pages.

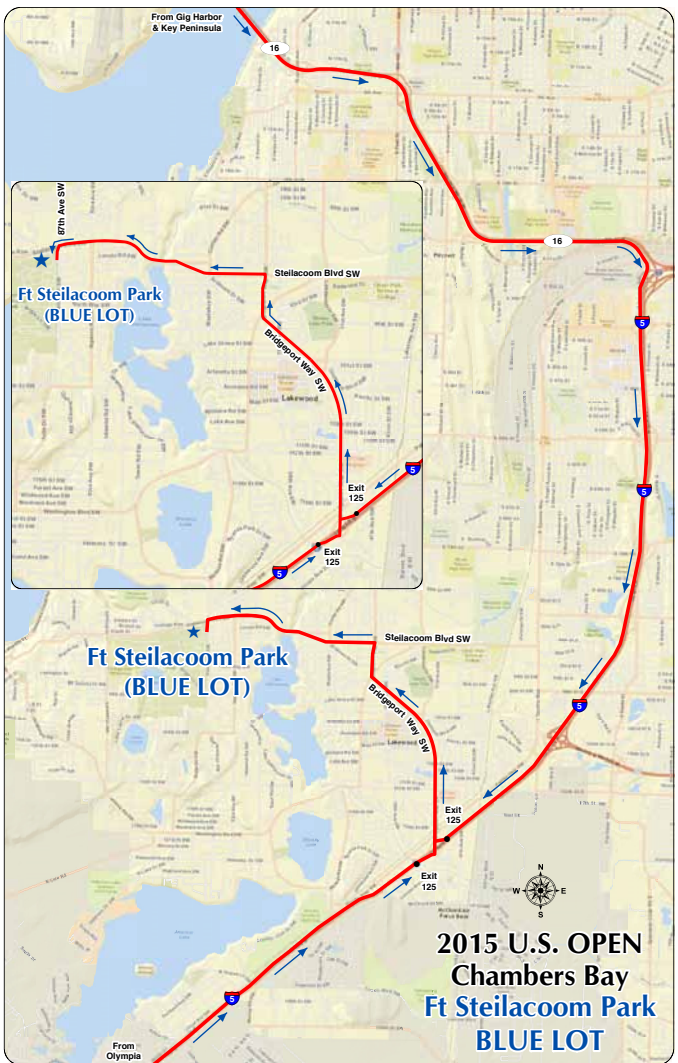
Spectators utilizing I–5, I–405, WA–18 or traveling from points north and east of Chambers Bay are advised to proceed to the RED Lot. Complimentary shuttle transportation is expected to take approximately 30 minutes in each direction. A map and driving directions to the RED Lot are on subsequent pages.

Please note: There is no general parking or disabled spectator parking available in the immediate vicinity of the golf course. All other parking is by permit only.

BLUE LOT DRIVING DIRECTIONS

[From points South using I–5 Northbound](#)

- Follow I–5 northbound to Exit 125 for Bridgeport Way (toward JBLM McChord Field).
- Take Exit 125 and turn left onto Bridgeport Way SW and follow for approximately 2.3 miles.
- Turn left onto Steilacoom Boulevard SW and follow for 0.7 miles.
- Turn left to remain on Steilacoom Boulevard SW and continue for 1.0 miles.
- Follow signage to parking.



[From points West \(Gig Harbor/Key Peninsula\) using WA-16 Eastbound](#)

- Follow WA-16 East, crossing the Tacoma Narrows Bridge (toll) to I-5 South (Portland).
- Follow signs to I-5 South (Portland).
- Merge onto I-5 South and continue for 5.8 miles to Exit 125 for Bridgeport Way (toward JBLM McChord Field).
- Take Exit 125 and turn right onto Bridgeport Way SW and follow for approximately 2.3 miles.
- Turn left onto Steilacoom Boulevard SW and follow for 0.7 miles.
- Turn left to remain on Steilacoom Boulevard SW and continue for 1.0 miles.
- Follow signage to parking.

RED LOT DIRECTIONS

From points North (Seattle) using I-5 Southbound

- Continue south on I-5 to Exit 142A for WA-18 East (toward Auburn).
- Merge onto WA-18 East and follow for 2.5 miles.
- Take the West Valley Highway exit (toward WA-167 S).
- Turn right onto West Valley Highway and follow for 0.5 miles.
- Turn left onto 15th Street SW and follow for 0.1 miles.
- Turn right to merge onto WA-167 South (toward Tacoma) and follow for 7.2 miles to WA-512 West exit (toward WA-161/Puyallup/Olympia).
- Exit onto WA-512 West and follow for 1.3 miles. Take the Pioneer Avenue exit (toward Puyallup River).
- Turn left onto E. Pioneer Avenue and follow 0.1 miles. Turn left onto 7th Street SE and follow for 0.4 miles.
- Follow signage to parking.

From points North (Bellevue/Eastside) using I-405 Southbound

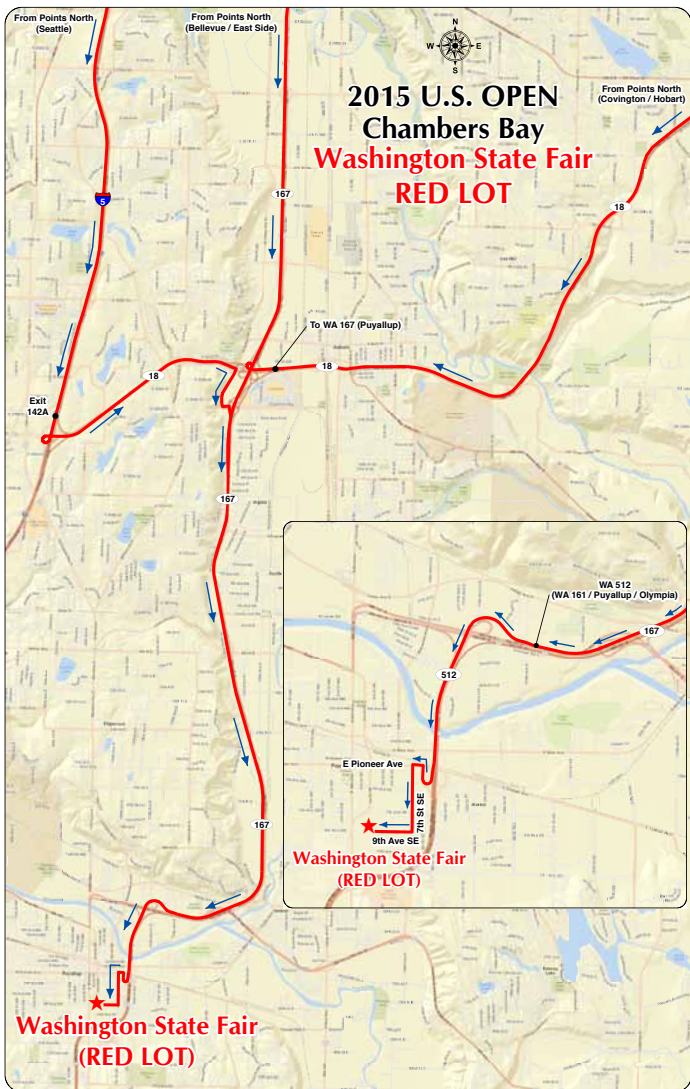
- Follow I-405 southbound to Exit 2A to merge onto WA-167 South (toward Kent/Auburn).
- Merge onto WA-167 South and follow for 20.4 miles.
- Take the WA-512 West exit (toward WA-161/Puyallup/Olympia).
- Exit onto WA-512 West and follow for 1.3 miles. Take the Pioneer Avenue exit (toward Puyallup River).
- Turn left onto E. Pioneer Avenue and follow 0.1 miles. Turn left onto 7th Street SE and follow for 0.4 miles.
- Follow signage to parking.

From points Northeast (Covington/Hobart) via WA-18 Westbound

- Follow WA-18 West. Take the exit for WA-167 South (toward Puyallup).
- Merge onto WA-167 South and follow for 8.7 miles to WA-512 West (toward WA-161/Puyallup/Olympia).
- Exit onto WA-512 West and follow for 1.3 miles. Take the Pioneer Avenue exit (toward Puyallup River).
- Turn left onto E. Pioneer Avenue and follow 0.1 miles. Turn left onto 7th Street SE and follow for 0.4 miles.
- Follow signage to parking.

Passenger, Taxi or Limousine drop-off

Passenger, taxi or limousine drop-off will only be allowed at the designated area located at Sunset Primary School in University Place, Wash. within a 5-10 minute walk of Gate 2 and the 13th hole. There is no parking or staging for vehicles, so please coordinate pick-up times accordingly. Please follow directional



signs and parking attendants to the appropriate pick-up and drop-off location. Due to traffic restrictions, access is limited to vehicles no larger than a 12-passenger van or limousine.

Bicycles

Spectators choosing to ride a bicycle to the championship are instructed to follow directions and signage to the General Spectator parking lots (BLUE Lot or RED Lot) or to the designated passenger, taxi or limo drop off located at Sunset Primary School. Bike racks will be provided to secure bikes at this location. Owners are responsible for the security of their bicycles.

ABOUT THE UNITED STATES GOLF ASSOCIATION

The USGA conducts the U.S. Open, U.S. Women's Open and U.S. Senior Open, as well as 10 national amateur championships, two state team championships and international matches, attracting players and fans from more than 160 countries. Together with The R&A, the USGA governs the game worldwide, jointly administering the Rules of Golf, Rules of Amateur Status, equipment standards and World Amateur Golf Rankings. The USGA's reach is global with a working jurisdiction in the United States, its territories and Mexico, serving more than 25 million golfers and actively engaging 150 golf associations.

The USGA is one of the world's foremost authorities on research, development and support of sustainable golf course management practices. It serves as a primary steward for the game's history and invests in the development of the game through the delivery of its services and its ongoing "For the Good of the Game" grants program. Additionally, the USGA's Course Rating and Handicap systems are used on six continents in more than 50 countries.

For more information about the USGA, visit usga.org.



USGA[®]
usopen.com