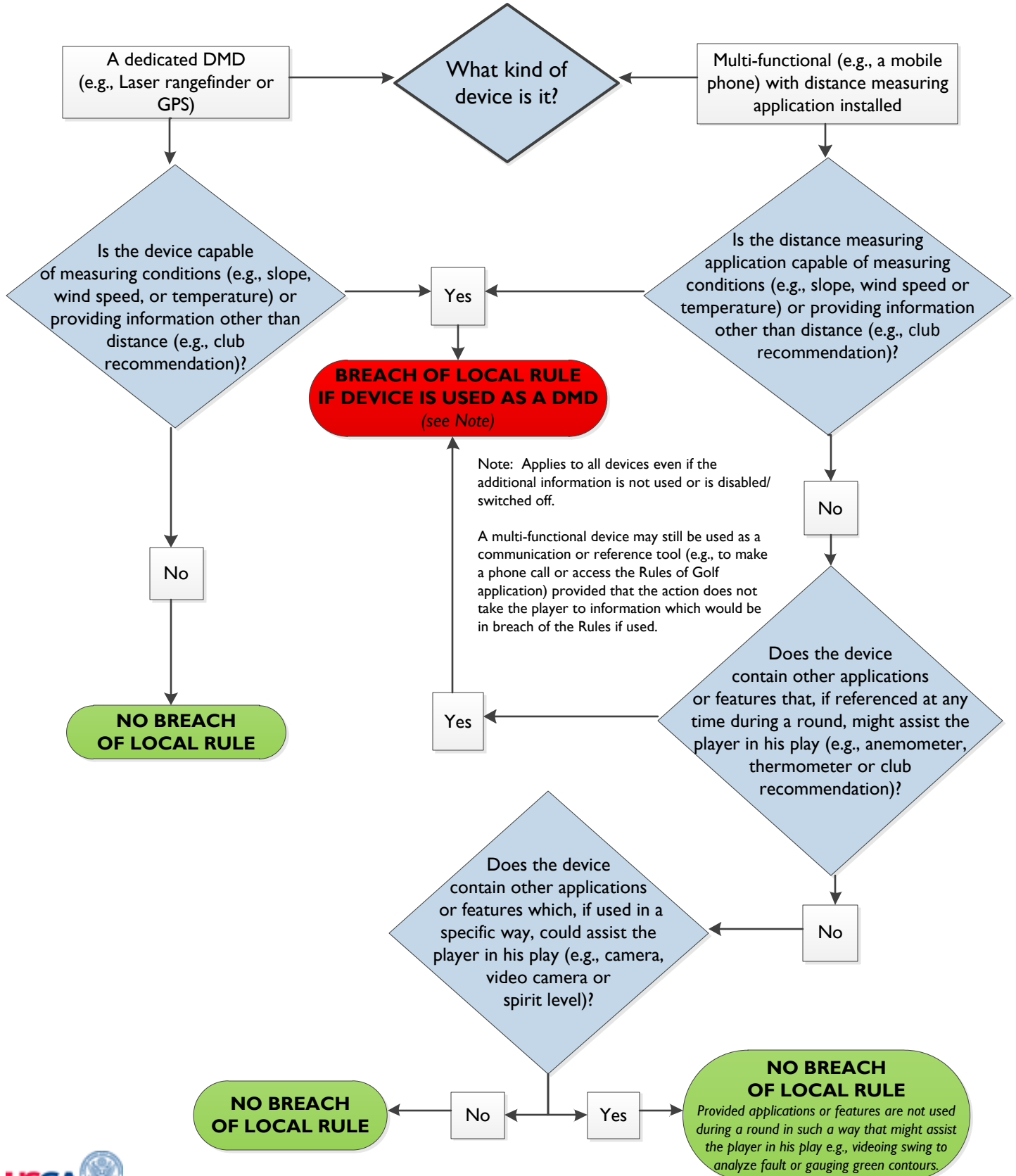


CAN I USE MY DISTANCE MEASURING DEVICE (DMD)?
(Effective January 1, 2014)

Rule 14-3 prohibits the use of DMDs. However, a Committee or Golf Club may introduce a Local Rule permitting the use of devices which are capable of measuring distance, and distance only. The use of any DMD (a) when the Local Rule is not in place, or (b) which is capable of measuring conditions or providing information that might assist the player in his play other than distance, would be a breach of Rule 14-3, the penalty for which is disqualification.

This flowchart is designed to help golfers and/or Officials determine the status of a particular device for use as a DMD – when the Local Rule is in place. **Players should always consult the Committee with any concerns/questions.**



General Caveat: During a round, if the Internet is used to find information or measurement tools which would assist the player in his play, e.g., to gauge current wind and temperature conditions at a precise location on the course, the player would be in breach of Rule 14-3.